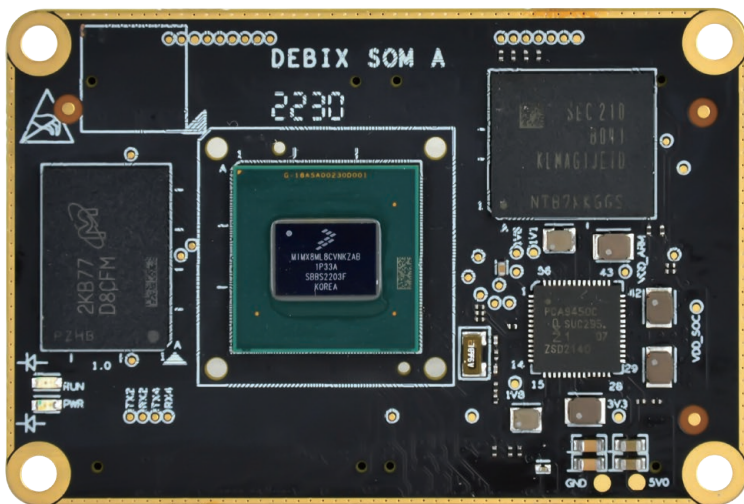


DEBIX SOM A



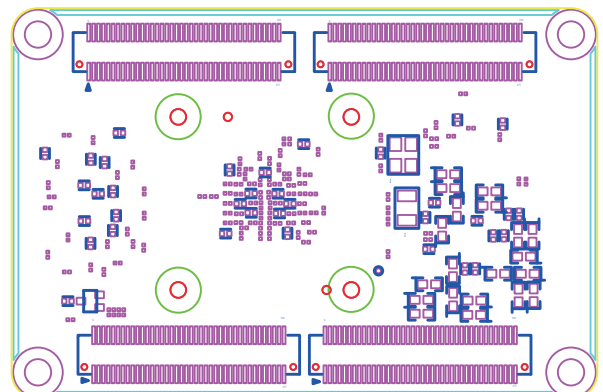
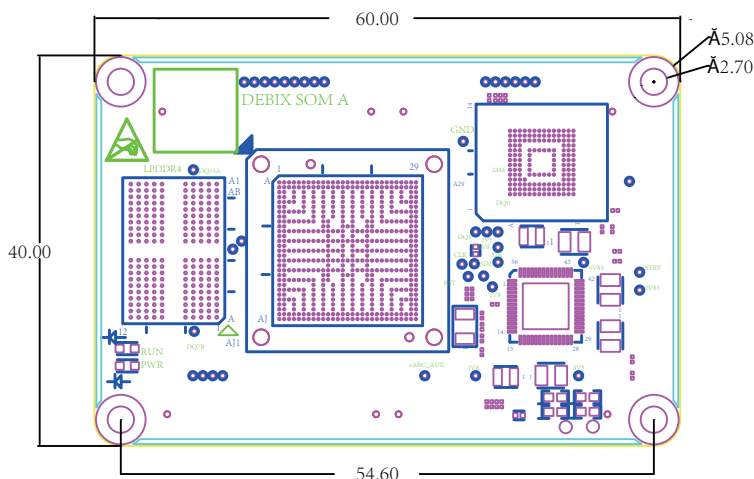
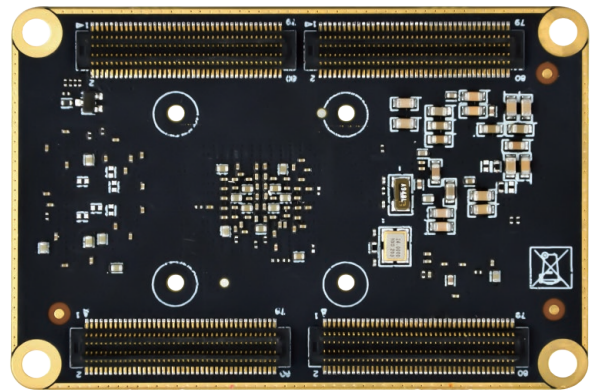
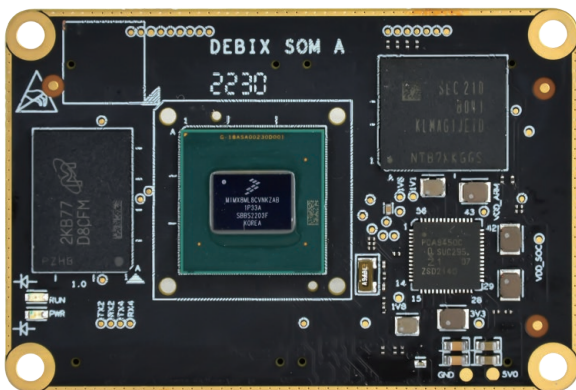
DEBIX SOM A i.MX 8M Plus Core Board

Overview:

DEBIX SOM A is the first System on Module product of the DEBIX series. As with the DEBIX Model A SBC, it is based on NXP i.MX 8M Plus CPU with a 2.3 TOPS NPU, which brings us the same powerful system performance. This core board design has some notable benefits, such as design reutilization, reduction of development time of the carrier boards, and flexible integration into various embedded systems.

Main Features:

- **Industrial-grade performance:** Designed for demanding applications in Industry 4.0, IoT, smart cities, and multimedia.
- **Comprehensive software support:** Includes Android 11, Yocto-L5.10.72_2.2.0, Ubuntu 22.04, and Windows 10 IoT Enterprise operating systems, along with basic software for fast and direct applications.
- **Real-time control:** Cortex-M7 core for real-time responsiveness, supported by robust control networks like CAN FD and dual Gigabit Ethernets (one with TSN capability).
- **Advanced vision system:** Dual Image Signal Processors (ISPs) and dual camera inputs for efficient image processing and analysis.
- **Advanced Multimedia:** 1080p60 video encode/decode (H.265/H.264), 3D/2D graphics acceleration, and multiple audio/voice functionalities.



Version	NPU	VPU	ISP	HiFi 4
DEBIX SOM A Standard	1	1	1	1

Certificates:



Safety Instruction and Warnings:

General:

- Avoid exposure to water, moisture, and conductive surfaces while operating.
- Handle with care to avoid mechanical or electrical damage to the circuit board and connectors.
- Only handle the board by the edges when powered on to minimize the risk of electrostatic discharge damage.

Power:

- Use the product with a carrier board and connect it to a 5V/2A external power supply.

Environment:

- Operate in a well-ventilated environment, even if using a case.
- Place on a stable, flat, non-conductive surface and avoid contact with conductive items.

Connections:

- Use peripherals that comply with relevant standards for the country of use and ensure proper insulation and operation.

Additional notes:

- This summary is not exhaustive, please refer to the full User Manual for details.
- If you are unsure about any aspect of safety or operation, consult a qualified professional.

Contact Us:

Headquarters: DEBIX Technology Inc., 8345 Gold River Ct., Las Vegas, NV 89113, USA

Factory: 5-6/F., East Zone, Shunheda A2 Building, Liuxiangdong Industrial Park, Xili, Nanshan Dist., Shenzhen, China

Email: info@debix.io

Website: www.debix.io

Community: <https://discord.com/invite/adaHHaDkH2>

